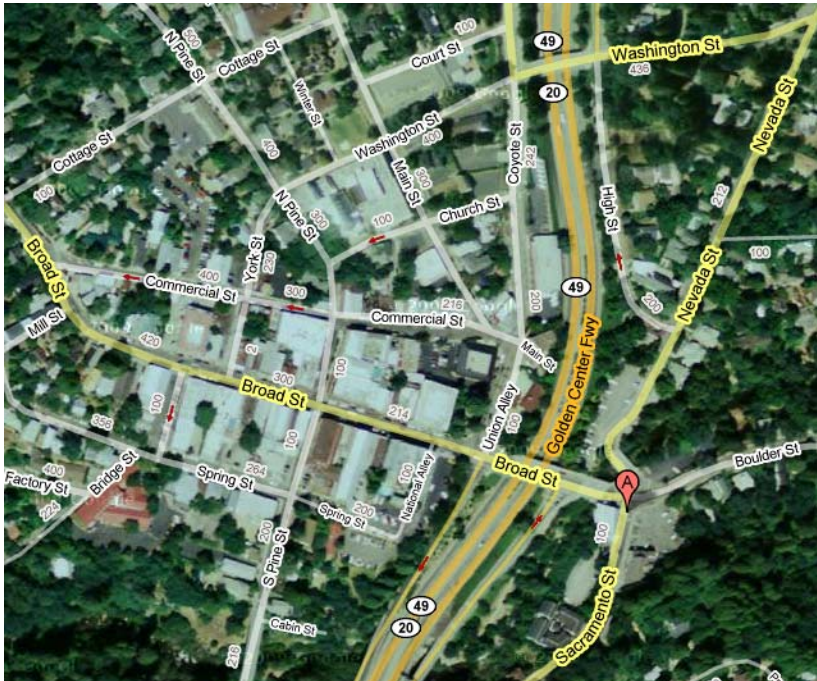


SIERRA COMMONS

Where is Sierra Commons?

Sierra Commons is stationed on the top floor of the Stonehouse in Nevada City's historic downtown. Built in 1882, the Stonehouse is located at the intersection of Broad, Nevada, Boulder, and Sacramento Street—just across the creek from the heart of downtown.



If you're looking for any of the following businesses, you'll find them here:

- The Funkhole
- Logan and Associates
- Mike Moers
- Transpac Software
- Velocity7

Our vitals:

107 Sacramento St., Suite 300
Nevada City, CA 95959

www.sierracommons.org

From Highway 49 Eastbound:

1. Take the Broad St. exit.
2. Turn right on Broad St.
3. Go straight through the intersection.
4. Immediately turn right into the Stonehouse parking lot.

From Highway 49 or Highway 20 Westbound:

1. Take the Coyote St. exit.
2. Turn left on Coyote St.
3. Drive about five blocks until you get to Broad St.
4. Turn left and go over the freeway.
5. Go straight through the intersection.
6. Immediately turn right into the Stonehouse parking lot.

I'm in the parking lot. Where's Sierra Commons?

Go through the gate to the patio behind the building. On the far side of the patio you will find exterior stairways that will take you all the way to the top level of the building.

You've made it.

There is also a pedestrian entrance off of Sacramento Street.